

SASOL SOUTH AFRICA

Fact Book



CONTENTS

Sasol South Africa

At a Glance	12
Full Year 2018 Highlights	12
Did you Know?	13
Operating Structure and the Products Produced	14

Sasol Khanyisa

Your Khanyisa Investment	16
--------------------------	----

The purpose of this fact book is to:

- Provide context for the Sasol Khanyisa transaction
- Description of the operations and business of Sasol South Africa Limited (SSA)
- Create an understanding of the method used to value SSA for the purposes of the Sasol Khanyisa transaction
- Assist shareholders to interpret the performance of SSA through the duration of the Sasol Khanyisa transaction

Reference material for the Sasol Khanyisa transaction can be found at www.sasolkhanyisa.com

SASOL SOUTH AFRICA AT A GLANCE

Sasol Limited is a petrochemical company headquartered in Johannesburg, South Africa, with its main operations in Sasolburg and Secunda. Sasol South Africa (SSA) is a subsidiary of Sasol Limited and is Sasol's largest operating entity.

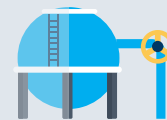
The business of SSA includes the following:



Secunda
Synfuels
Operations



Secunda
Chemicals
Operations



Sasolburg
Operations



SA Base and
Performance
Chemicals



Sasol
Technology



Sasol
Gas

SSA houses our South African operations and businesses which are Sasol's most cash generative assets.

FULL YEAR 2018 HIGHLIGHTS FOR SSA



Company Value

R197bn*

Turnover

R88bn

Capital Expenditure

R13bn

* Enterprise value per independent valuation on 1 June 2018, the date the Sasol Khanyisa transaction was implemented

DID YOU KNOW?

SSA Employees



There are more than **17 000** employees in SSA

SA Base and Performance Chemicals



Sasol is a producer and marketer of a range of commodity chemicals based on the Fischer-Tropsch (FT) value chains, as well as a differentiated producer of organic and inorganic speciality chemicals. Our products are used in large variety of applications, including aerosols, cosmetics, fragrances, packaging, paints, adhesives, pharmaceuticals, polishes, printing and plastics and mining (particularly in gold extraction), pulp and paper, steel, textiles, water treatment and purification, agricultural fertilisers and chemicals.

Sasolburg Operations



Sasolburg Operations covers an area of 51,4 km², comprising three chemicals facilities, namely the Sasol One Site, Midland Site, Bunsen Site, and two power generation facilities. Sasol's and South Africa's first stand-alone gas-to-power plant was commissioned in December 2012 – It is the largest power plant using gas engines installed in South Africa, making Sasol the second largest power producer in the country.

Secunda Chemicals Operations

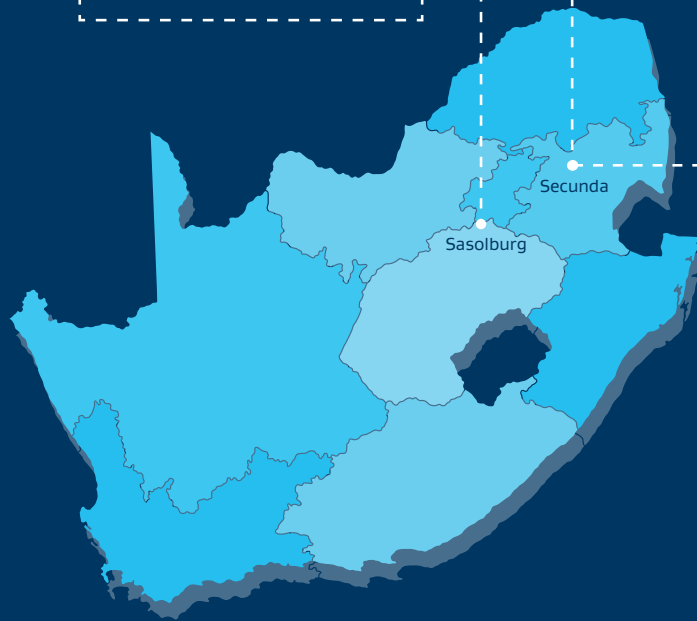


The Secunda Chemicals Operations hub is the consolidation of all the chemical operating facilities in Secunda.

Secunda Synfuels Operations



Secunda Synfuels Operations operates the world's only commercial coal-based synthetic fuels manufacturing facility, producing synthesis gas (syngas) through coal gasification and natural gas reforming.



Sasol Gas



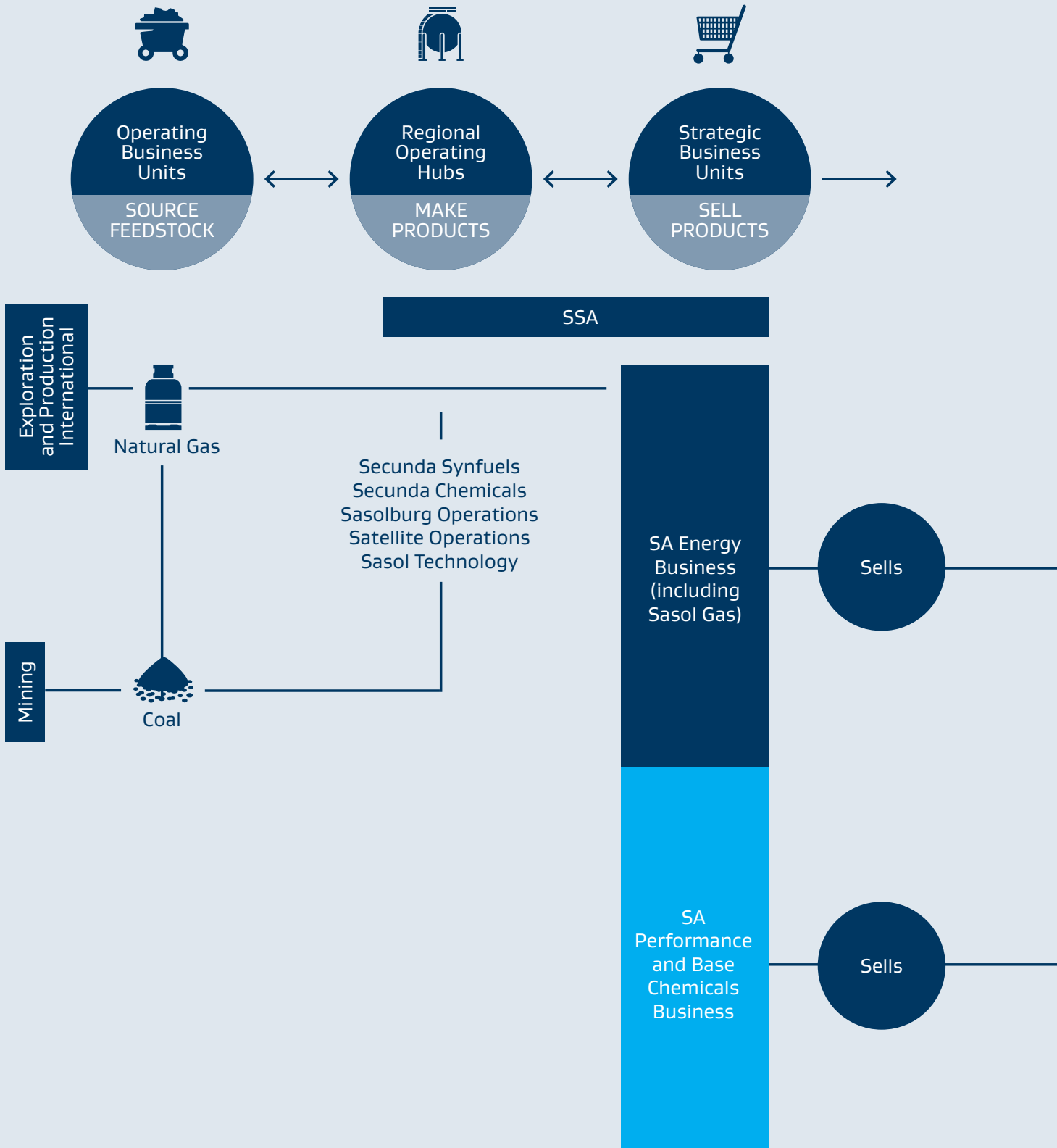
Markets and distributes natural gas from Mozambique and methane-rich gas from Secunda to customers in South Africa.

Sasol Technology



Sasol Group Technology has a research and technology team with over a third holding doctorates or masters' degrees in engineering and science. Their focus includes reducing the environmental footprint of our operations, including greenhouse gas emission reduction, water treatment and purification.

SSA'S OPERATING STRUCTURE AND THE PRODUCTS PRODUCED



What do the main divisions, subsidiaries and joint ventures of SSA do?

Secunda Synfuels Operations (SSO)

SSO operates the world's largest coal-to-liquids (CTL) facility which gasifies coal which is then converted through Sasol's Fischer-Tropsch technology into fuel components, heating gas and chemicals.

Secunda Chemicals Operations (SCO)

SCO separates, extracts and processes chemicals from SSO into Explosives, Fertilisers, Plastics and Solvents.

Satellite Operations

Satellite Operations Hub comprises of a 3 000 kilometre network of natural and methane-rich Gas Pipelines, a Wax Blending Plant in Durban and the Ekandustria based Explosives operations.

Sasol Gas

Sasol Gas purchases natural gas from Mozambique and sells to SSA operations in Secunda and Sasolburg as well as to the external market.

Sasolburg Operations (SO)

Sasolburg Operations uses gas to produce a wide range of chemicals including waxes. SO also produces electricity and other utilities and provides support services to the rest of our Sasolburg sites.

Base Chemicals (BC)

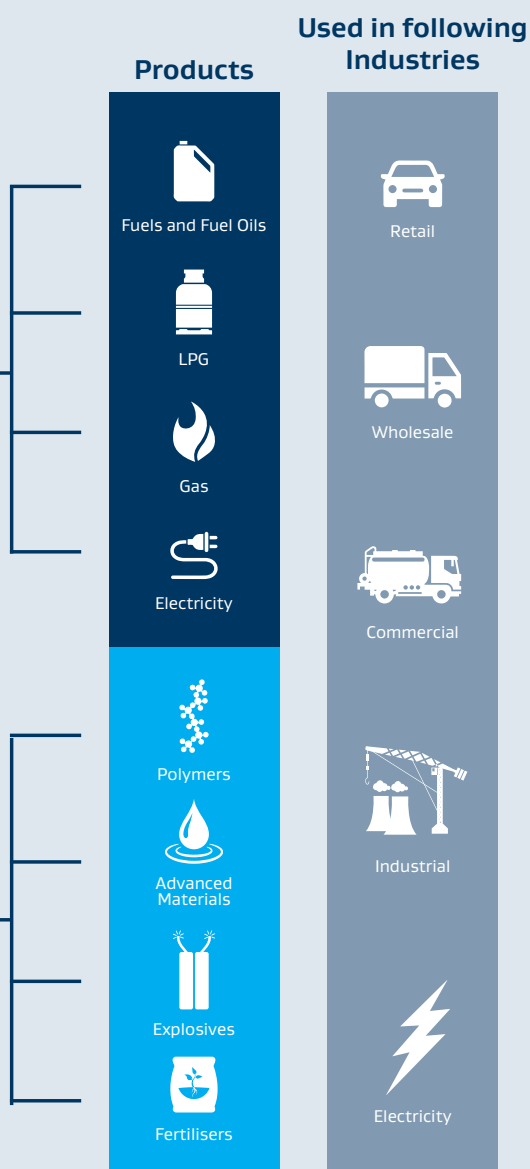
BC markets a broad portfolio of SSA's commodity chemicals globally. The business includes Polymers, Solvents, and Fertilisers & Explosives.

Performance Chemicals (PC)

PC markets SSA's speciality chemicals globally. The business includes Advanced Materials and Wax.

Energy

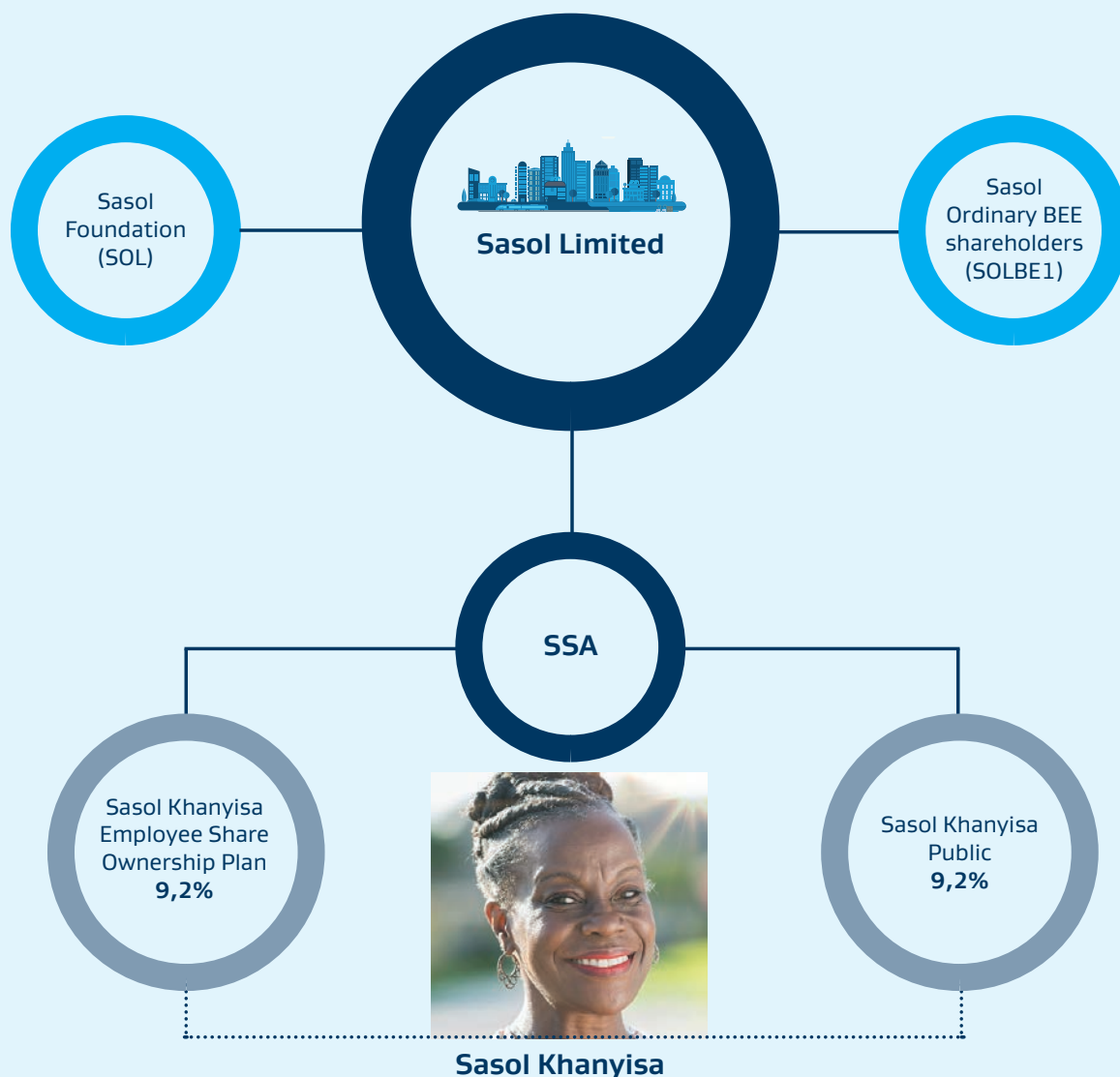
The Energy business markets and sells all of SSA's fuel, gas and electricity products as well as speciality gases.



YOUR KHANYISA INVESTMENT

After the successful implementation of Sasol Khanyisa in June 2018, the Sasol Khanyisa participants now own approximately 18,4% of SSA.

- The shares in SSA, which the Sasol Khanyisa Public shareholders will indirectly hold, are currently worth approximately R320 per share and were funded by Sasol.
- This funding will be paid off using dividends declared by SSA over the maturity period of up to 10 years. The majority of dividends declared will not be paid directly to participants until the funding has been settled.
- Once the funding is settled, the Sasol Khanyisa Ordinary shares will be exchanged for Sasol BEE Ordinary (SOLBE1) shares listed on the empowerment segment of the JSE.



WHAT IS THE VALUE OF YOUR SASOL KHANYISA SHARE?

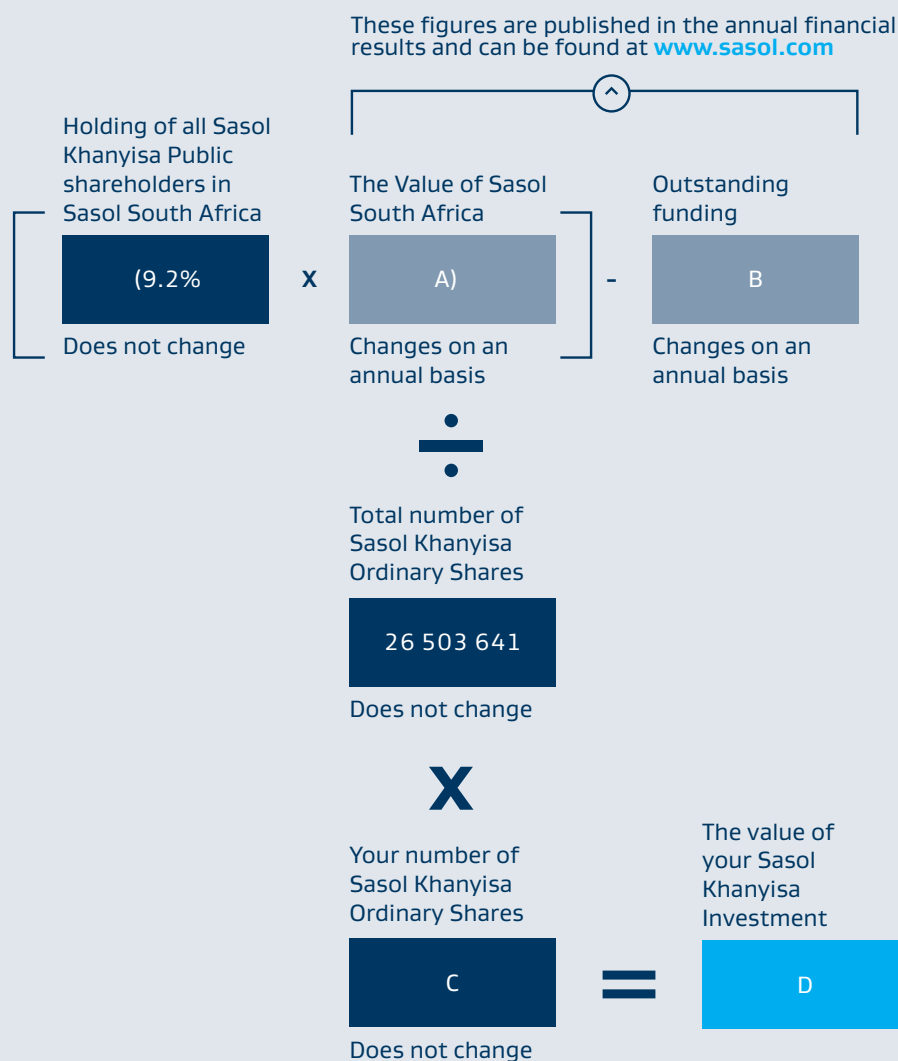
A. The value of the share will be determined by the repayment of the funding over the next 10 years, together with the performance and growth of Sasol South Africa over the same time.

B. Let us assume that a Khanyisa shareholder has 100 shares in SSA, and that after six years, the equity value of SSA is R91 billion and the outstanding funding that Khanyisa shareholders owe is R2 billion.

C. The shareholder's value in year six can then be calculated as*:

$$[(9.2\% \times R91bn) - R2bn] / 26,5m \text{ shares} \times 100 \text{ shares} = R24\ 042$$

See calculation below:



* Shareholder value can only be extracted when the funding is fully settled, or after 10 years.

KHANYISA VALUE

With the release of every interim and financial year-end results, Sasol will publish the information in the table below to enable shareholders to determine the value of their shareholding at that point in time.

Participants will be sent an SMS or email with a link to the section where these numbers are published.

30 June 2018		Khanyisa net value R'million
Fair value of SSA Group after share issue to participants		89 776
Attributable to Khanyisa Public participants	9,2%	8 251
Vendor funding Khanyisa Public participants		8 251
Net value ¹		–
		Rand
Khanyisa Public – approximate value per Khanyisa share		–

Oil price and exchange rate assumptions underpinning the valuation of SSA are largely aligned to a market view of macro economic assumptions, referencing a panel of externally forecasted assumptions.

1. Net value is expected to accrue over the term of the transaction.

Who do you contact for more information?

Via the Call Centre: 0800 000 222 (South African calls) | +27 11 370 7700 (International calls)
Or e-mail: sasolkhanyisa@computershare.co.za

